



PROJECT RE-ENVISION

UNIVERSITY OF FLORIDA

<https://pre.dcp.ufl.edu>

"There is a need to develop design elements for [existing] homes to facilitate a healthy and safe lifestyle for residents with disabilities, along with the types of physical configurations and technological adaptations that make them accessible for persons with disabilities." (HUD PD&R, FR-6000-N-29)

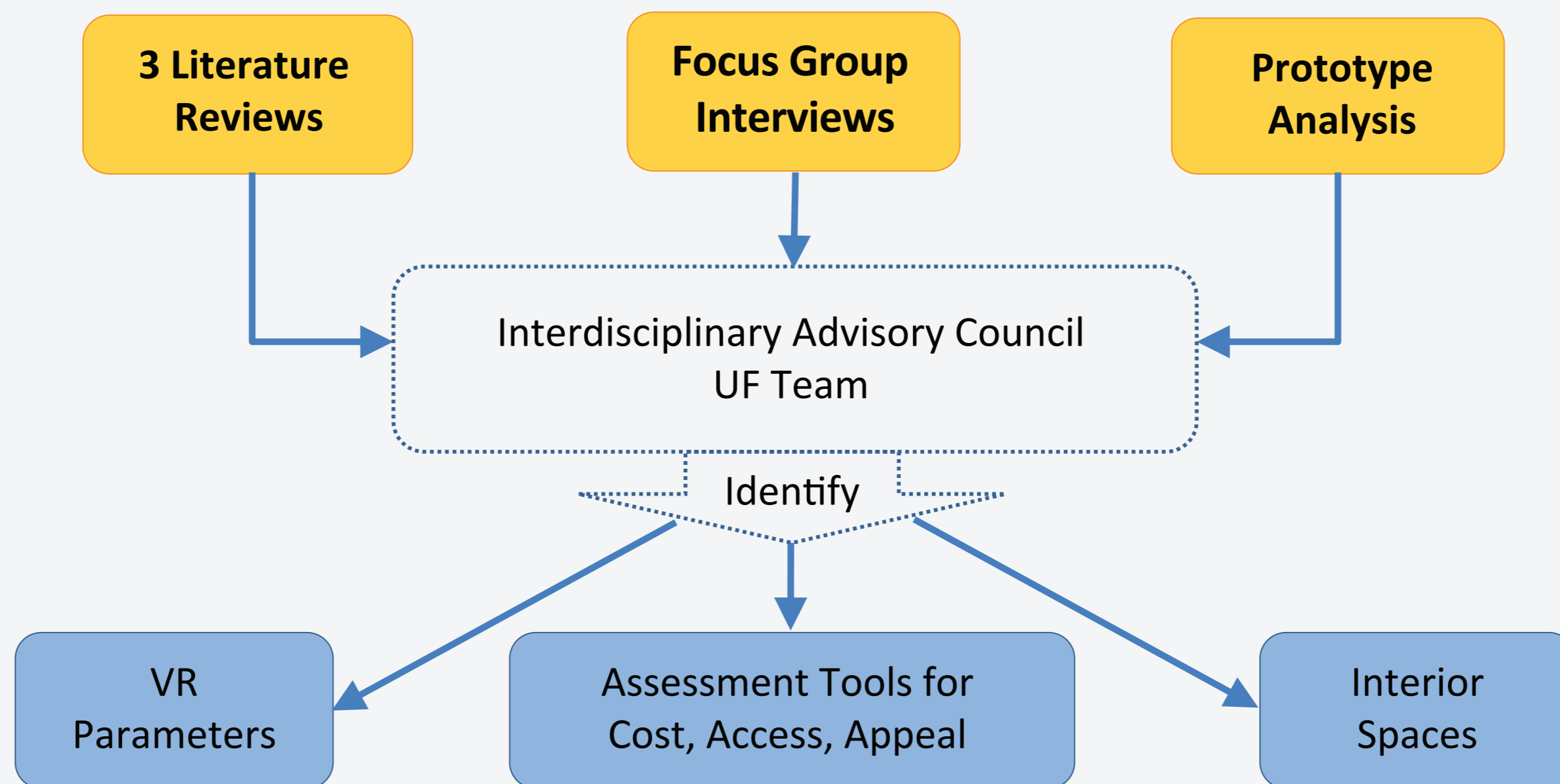
1

RESEARCH QUESTIONS

- 1 For existing small-scale attached housing, how best to redesign interior fixtures and layouts to make them more accessible, affordable, and appealing?
- 2 How can we let potential consumers experience and "test" these design solutions before they are built or renovated?
- 3 What are effective media formats for conveying this information to relevant industry and healthcare groups?

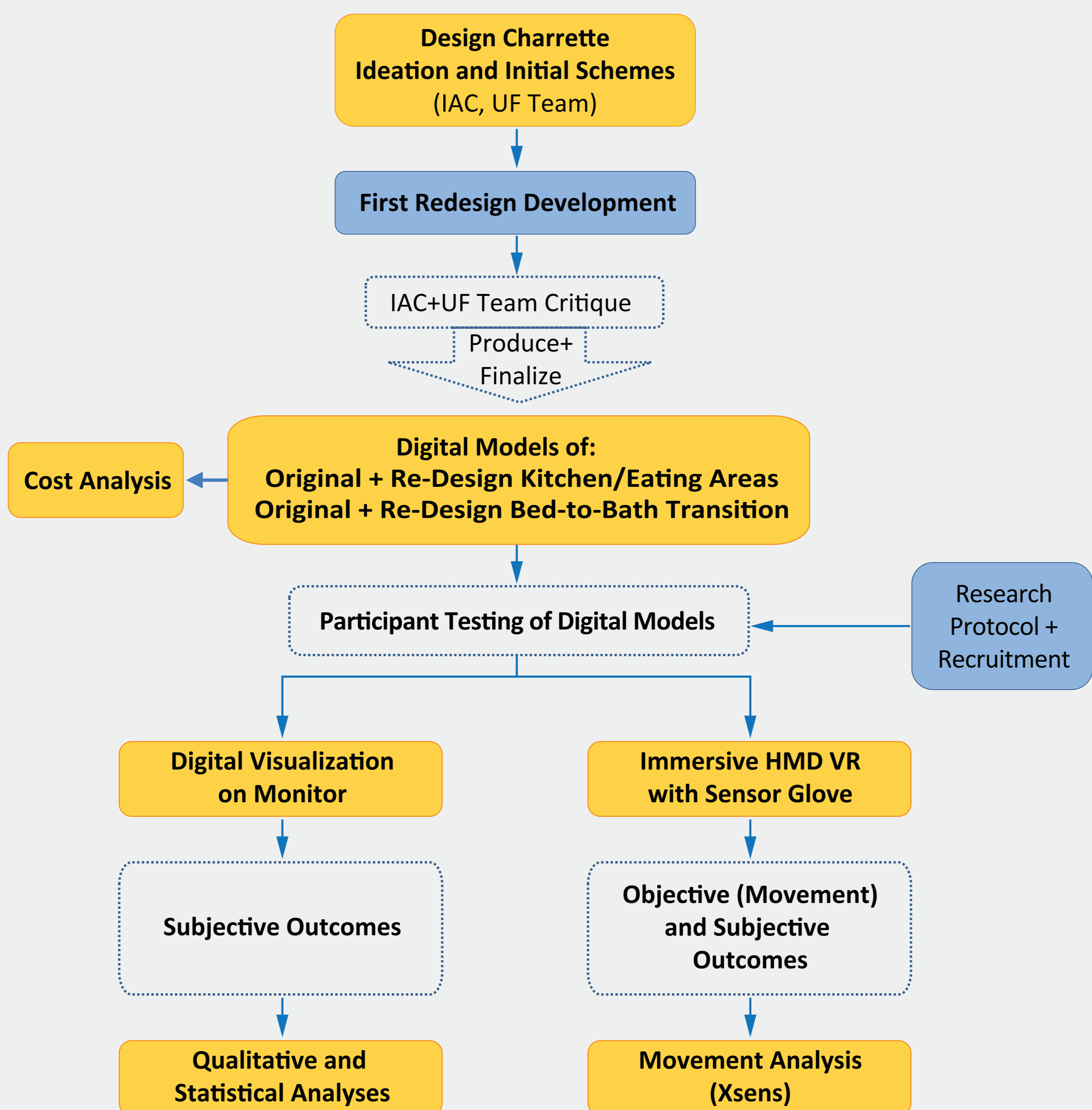
2

BACKGROUND RESEARCH



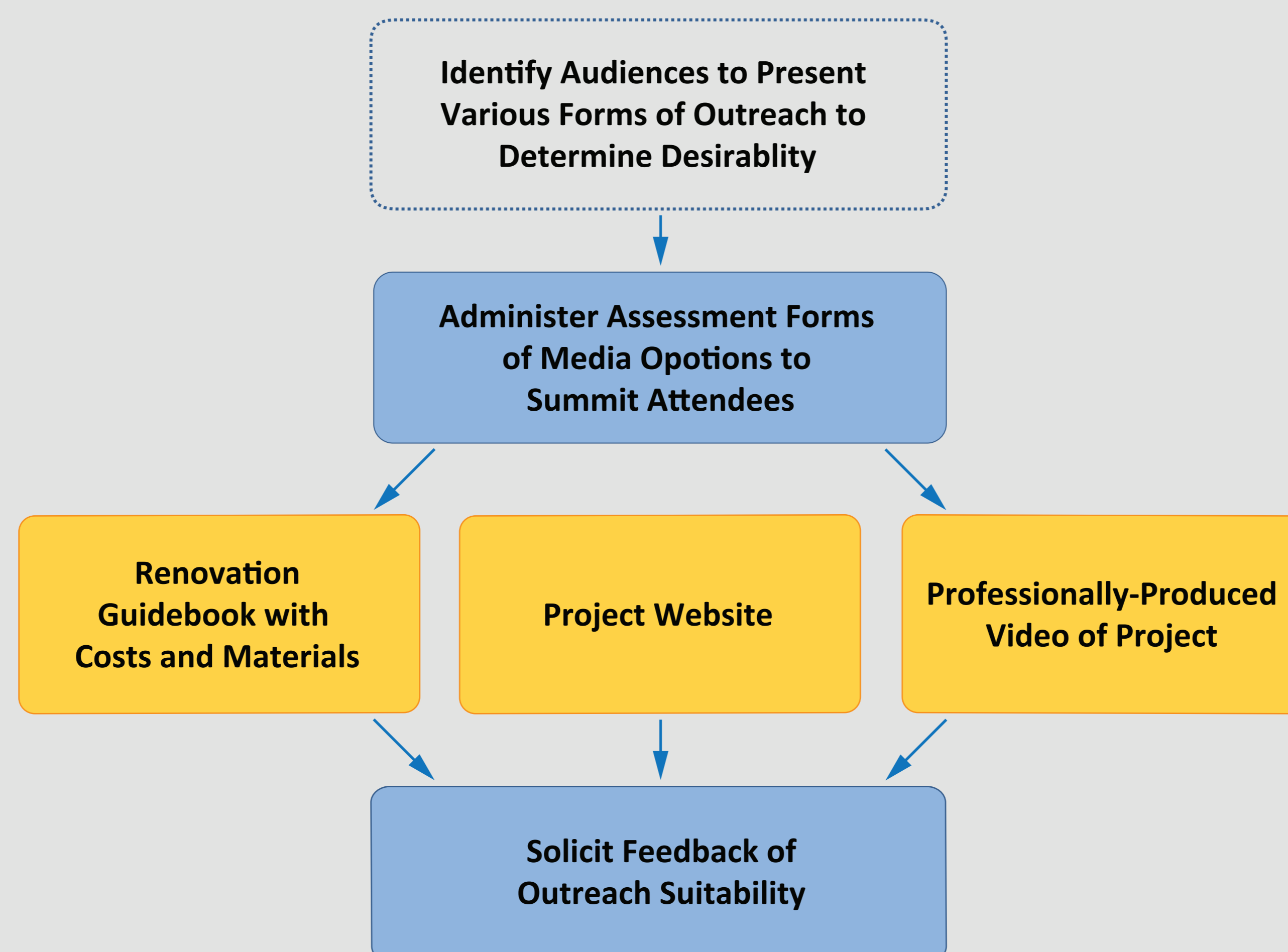
3

REDESIGN DEVELOPMENT AND DEMONSTRATION TESTING



4

DISSEMINATION RESEARCH



Investigators: Sherry Ahrentzen, Stephen Bender, Nichole Campbell, Randall Cantrell, Sherrilene Classen, Erin Cunningham, Boyi Hu, Raymond Issa, William O'Dell, Robert Ries, Ravi Srinivasan, Linda Struckmeyer
Graduate Assistants: Farah Akiely, Deepak Balakrishnan, Yuhao Chen, Carlyn Ellison, Jithin Gopinadhan, Xu Jin, Mahshad Kazemzadeh, Chunyao Liu, Xiaojie Lu, Yue Luo, Daniela Mujica La Rotta
Interdisciplinary Advisory Council: Mary Ayala, Tony Delise, Valerie Fletcher, Claudia Friedel, Mark Humbert, William (Bill) Lazar, Charles (Chuck) Levy, Alex Mihalidis, Nancy Perez Miller, Rose Nealis, Michael Pellett, Deborah Pierce, Ron Shorr, Marc Smith, Luz Semeah, Sheryl Soukup, Abbe H. Will, Scott Winzeler

<https://pre.dcp.ufl.edu>